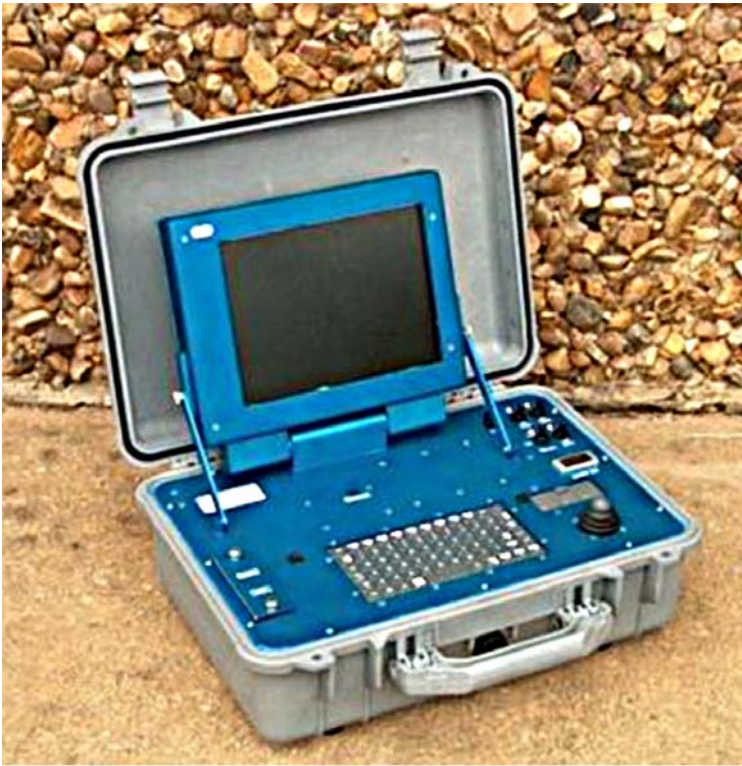
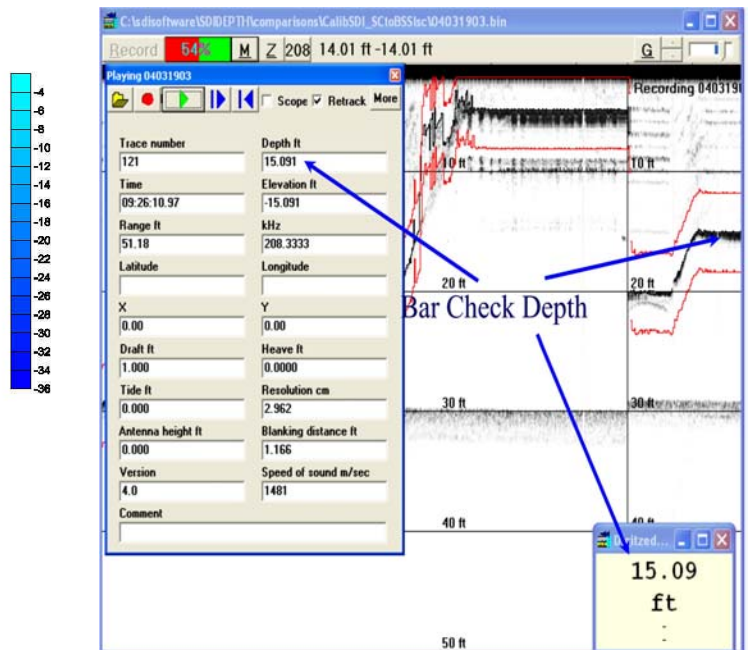
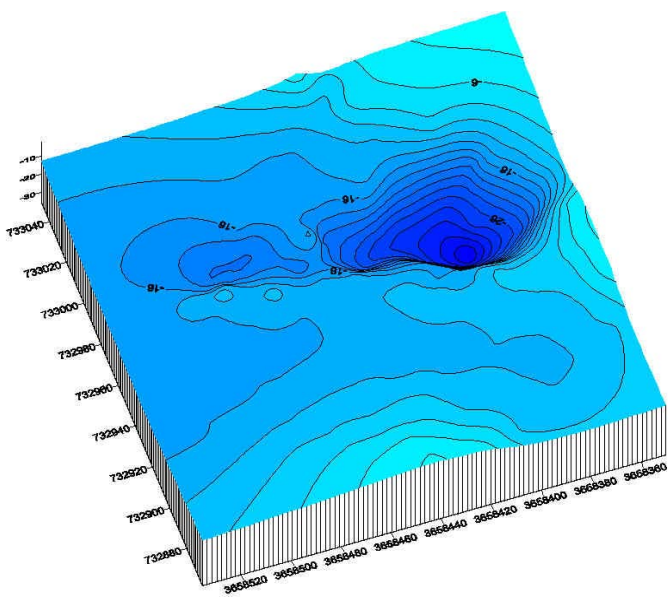


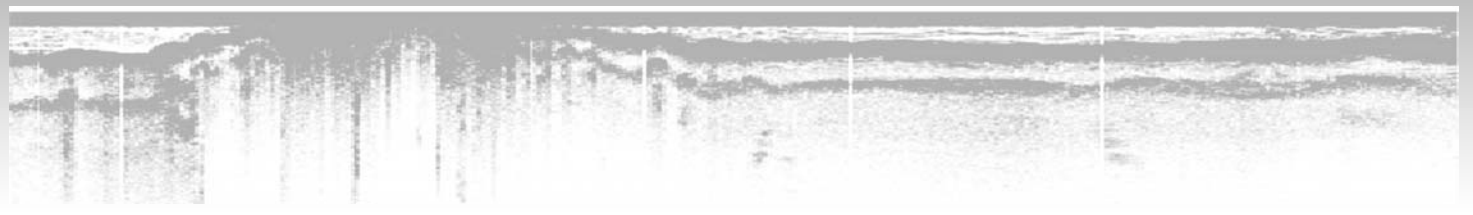
IDS Intelligent Depth Sounder



SDI's Intelligent Depth Sounder is ideal for surveying in shallow water, harbors, and waterways and pre- and post-dredging applications. It is a simple-to-operate, full survey-grade depth sounder that digitizes the echo to 16-bit resolution and stores the full digital record on hard disk. IDS provides data playback with high resolution and detail. 65,536 shades of gray are digitized versus 16 shades of gray typical of paper records. Depth resolution is maintained regardless of the depth range. Positions, events and operator annotations are exchanged between HYPACK and SDIDEPTH programs. DEPTHPIC and SDIDEPTH software provide convenient replay and reprocessing of hydrographic data without hand digitizing or scaling of position. Navigation data and all other collection parameters are saved with all depth soundings. Post-processing with DEPTHPIC saves XYZ data in ASCII text format compatible with HYPACK, SURFER, AutoCAD, ArcView and GIS programs for contouring and TIN mapping.

IDS operates from 12 vdc and with navigation software, a battery and a boat, you are ready to survey. SDI's proprietary display is daylight visible and also dims for excellent night viewing. SDI's hardened computers include internal shock mounted electronics, armored display windows, marine grade aluminum display housings and non-corrosive impact resistant cases, and stainless hardware. Display controls and hinges are o-ring sealed and connectors are waterproof or splash resistant.





Depth Sounder Specifications

Software	SDIDDEPTH windows pull-down menu, keyboard hot key and playback DEPTHPIC full record loading, post-processing with ASCII Text XYZ output*
Ranges	0 to 7.5m through 0 to 300m (> 200m operation)
Minimum Depth	1.2 feet (0.5 meter) standard, 8" (0.2m) optional
Frequency	200 kHz (operator settable +/- 10%), options for 24, 50, 100 and 400 kHz
Beam Pattern	9-degree standard, 3-degree optional (200kHz)
Resolution	1.5cm or 0.75cm
Sample rate	25,000 to 100,000/sec., operator settable
Transmit Cycles	1 to 50
Depth Units	Meters, Feet, Fathoms
Speed of Sound	Fresh, Salt, or settable 1400 TO 1600 m/s
Inputs for	Tide, draft, heave, blanking, keel alarm, NMEA standard DGPS data format
Zoom	Operator continuously selectable
Tracking	Automatic, settable and fixed with re-digitizing in playback
Tracking gates	0.1, 0.2, 0.5, 1, 2, 5, 10 (m, ft., ftm.)
Data Format	Compressed binary storage with ASCII text output compatible with HYPACK, SURFER, and GIS packages, now includes SEG-Y converter for Chesapeake

* HYPACK optional. SDI is a distributor for HYPACK software by Hypack, Inc.

Computer Specifications

Operating system	Windows XP (Vista Upgrade in process)
Clock Frequency	866 MHz or above
Input/ Output Ports	Serial, parallel, USB
Keyboard/Mouse	Waterproof backlit tactile keyboard, waterproof joystick/button pad
Data Storage	60GB Hi-G shock standard (up to 160GB optional) 200g read/write
Data transfer	External USB CDRW and USB flash drive (1GB flash drive provided)
Display Type	10.4" diagonal daylight viewable LCD TFT, 1024 x 768 XGA, 256,000 colors
Display Intensity	3 to 1400 cd/m2 (nit) full sunlight viewable and NVIS night vision compatible
External Display	VGA analog output for optional external display

System Specifications

Input Power	12vdc @ 2.3 amps
Size	18" w by 15" d by 7"h (1 cu.ft.)
Weight	24 lbs.



Made in USA



Listed



Specialty Devices, Inc.

2905 Capital St., Wylie, Texas, USA. 75098

Ph: 972-429-7240 Fax: 972-429-7243

PDHigley@SpecialtyDevices.com www.SpecialtyDevices.com